



CASE REPORT

onda

Disclaimer

The present material is merely illustrative. The policy described is not of a suggestive nature, it is not intended to be exclusive and/or the best for the treatment of this case and it is not intended to substitute or influence in any way the diligence, prudence and expertise of the operator.

Although the present material is updated until the editing date and is considered reliable, the writer is not responsible for errors, omissions, imprecision, lack of completeness, punctuation errors or for the information herein contained.

The present document may contain technical imprecision and typographical errors or omissions.

Except for the rules bound by law, the writer specifically:

- a) decline any responsibility for accident, damage or prejudicial consequence of any type and/or nature which could derive from the use of any device, system or technology described in the present material;
- d) does not assume any responsibility for consequence deriving from the action, omission and/or errors of users/operators or for any loss or damage suffered or caused as a consequence of the use of the information published in one of these pages;
- c) is not responsible for any damage, claim, request or legal action, whether direct or indirect, specific, incidental, consequential or punitive, resulting from the use of this document and/or the information herein contained.

The information contained in the present document:

- a) is not intended to be a deal or proposal, nor does it constitute any contractual obligation towards those who read or use these pages;
- b) can, at the exclusive and indisputable discretion of the writer, be deleted, modified and/or updated at any moment without notice.

All the information contained in this document is property of DEKA M.E.L.A. s.r.l.

LOCALIZED FAT AND LAXITY

Coolwaves® Parameters*

Area	Abdomen
Handpiece	Deep
Power	140 W
Dose	80,000 J
Cooling	5° C
Sessions	1

* Database Onda protocols refer to a 15x15 cm treatment area – unless otherwise stated. In a single session could be treated 1 or more 15x15 squares according to single patient needs.

1/2



Before treatment.



45 days after 1 single session.

LOCALIZED FAT AND LAXITY

Coolwaves® Parameters*

Area	Abdomen - Bra Line
Handpiece	Deep
Power	140 W
Dose	80,000 J
Cooling	5° C
Sessions	1

* Database Onda protocols refer to a 15x15 cm treatment area – unless otherwise stated. In a single session could be treated 1 or more 15x15 squares according to single patient needs.

2/2



Before treatment.



45 days after 1 single session.

LOCALIZED FAT

Coolwaves® Parameters*

Area	Abdomen
Handpiece	Deep
Power	120 W
Dose	80,000 J
Cooling	5° C
Sessions	2

* Database Onda protocols refer to a 15x15 cm treatment area – unless otherwise stated. In a single session could be treated 1 or more 15x15 squares according to single patient needs.



Before treatment.



Follow-up after the 2nd session.

CELLULITE

Coolwaves® Parameters*

Area	Thighs – Knees
Handpiece	1 Deep, 2 Shallow
Power	130 W
Dose	70,000 J
Cooling	5° C
Sessions	3

* Database Onda protocols refer to a 15x15 cm treatment area – unless otherwise stated. In a single session could be treated 1 or more 15x15 squares according to single patient needs.

1/2



Before treatment.



Follow-up after the 3rd session.

CELLULITE

Coolwaves® Parameters*

Area	Thighs
Handpiece	1 Deep, 2 Shallow
Power	140 W
Dose	90,000 J
Cooling	5° C
Sessions	3

* Database Onda protocols refer to a 15x15 cm treatment area – unless otherwise stated. In a single session could be treated 1 or more 15x15 squares according to single patient needs.

2/2



Before treatment.



Follow-up after the 3rd session.

CELLULITE AND LOCALIZED FAT

Coolwaves® Parameters*

Area	Trochanter – Under Buttocks – Thighs
Handpiece	1 Deep, 2 Shallow, 1 Deep
Power	140 W
Dose	90,000 J
Cooling	5° C
Sessions	4

* Database Onda protocols refer to a 15x15 cm treatment area – unless otherwise stated. In a single session could be treated 1 or more 15x15 squares according to single patient needs.



Before treatment.



Follow-up after the 4th session.

CELLULITE

Coolwaves® Parameters*

Area	Trochanter – Buttocks Thighs
Handpiece	Shallow
Power	130 W
Dose	90,000 J
Cooling	5° C
Sessions	2

* Database Onda protocols refer to a 15x15 cm treatment area – unless otherwise stated. In a single session could be treated 1 or more 15x15 squares according to single patient needs.



Before treatment.



35 days after the 2nd session.

LOCALIZED FAT AND LAXITY

1/2

Coolwaves® Parameters*	
Area	Abdomen
Handpiece	Deep
Power	140 W
Dose	140,000 J
Cooling	5° C
Sessions	2
Waist reduction	10 cm for the high abdomen and 5 cm for the lower abdomen



Before treatment.

* Database Onda protocols refer to a 15x15 cm treatment area – unless otherwise stated. In a single session could be treated 1 or more 15x15 squares according to single patient needs.



30 days after the 2nd session.

LOCALIZED FAT AND LAXITY

2/2

Coolwaves® Parameters*	
Area	Abdomen
Handpiece	Deep
Power	140 W
Dose	140,000 J
Cooling	5° C
Sessions	2
Waist reduction	10 cm for the high abdomen and 5 cm for the lower abdome

* Database Onda protocols refer to a 15x15 cm treatment area – unless otherwise stated. In a single session could be treated 1 or more 15x15 squares according to single patient needs.



Before treatment.



30 days after the 2nd session.

LOCALIZED FAT AND LAXITY

Coolwaves® Parameters*

Area	Bra Line
Handpiece	Deep
Power	140 W + 115 W
Dose	50,000 J + 10,000 J
Cooling	5° C
Sessions	1

* Database Onda protocols refer to a 15x15 cm treatment area – unless otherwise stated. In a single session could be treated 1 or more 15x15 squares according to single patient needs.

1/2



Before treatment.



30 days after 1 single session.

LOCALIZED FAT AND LAXITY

Coolwaves® Parameters*

Area	Bra Line
Handpiece	Deep
Power	140 W + 115 W
Dose	50,000 J + 10,000 J
Cooling	5° C
Sessions	1

* Database Onda protocols refer to a 15x15 cm treatment area – unless otherwise stated. In a single session could be treated 1 or more 15x15 squares according to single patient needs.

2/2



Before treatment.



30 days after 1 single session.

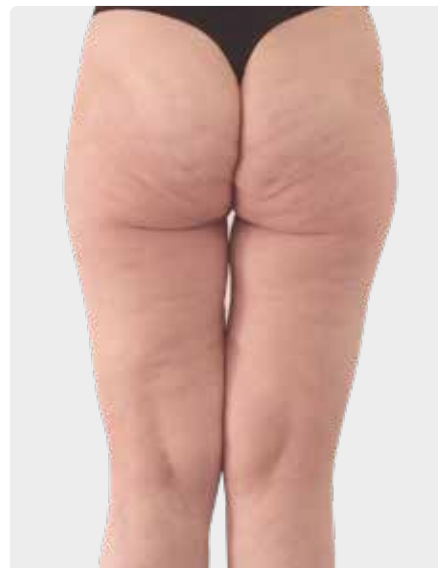
CELLULITE

Coolwaves® Parameters*

Area	Trochanter – Buttocks Thighs
Handpiece	Deep
Power	200 W
Dose	215,000 J
Cooling	5° C
Sessions	1
Treated Area	25x21 cm



Before treatment.



50 days after 1 single session.

CELLULITE

Coolwaves® Parameters*

Area	Thighs – Knees
Handpiece	Deep
Power	180 W
Dose	215,000 J
Cooling	5° C
Sessions	3
Treated Area	13x18 cm



Before treatment.



Follow-up after the 3rd session.

LAXITY

Coolwaves® Parameters*	
Area	Abdomen
Handpiece	Shallow
Power	140 W
Dose	80,000 J
Cooling	7° C
Sessions	1
Description	The patient had an important flabbiness problem due to two pregnancies with quite "big babies". She had already tried other procedures before Onda without significant results.

* Database Onda protocols refer to a 15x15 cm treatment area – unless otherwise stated. In a single session could be treated 1 or more 15x15 squares according to single patient needs.



Before treatment.



30 days after 1 single session.

LOCALIZED FAT AND LAXITY

Coolwaves® Parameters*

Area	Bra Line
Handpiece	Deep
Power	120 W
Dose	90,000 J
Cooling	5° C
Sessions	2

* Database Onda protocols refer to a 15x15 cm treatment area – unless otherwise stated. In a single session could be treated 1 or more 15x15 squares according to single patient needs.



Before treatment.



30 days after the 2nd session.

LOCALIZED FAT AND LAXITY

Coolwaves® Parameters*

Area	Anterolateral Flank
Handpiece	Deep
Power	120 W
Dose	90,000 J
Cooling	5° C
Sessions	1

* Database Onda protocols refer to a 15x15 cm treatment area – unless otherwise stated. In a single session could be treated 1 or more 15x15 squares according to single patient needs.



Before treatment.



30 days after 1 single session.

LOCALIZED FAT AND LAXITY

Coolwaves® Parameters*

Area	Abdomen - Anterolateral Flank
Handpiece	Deep
Power	130 - 140 W
Dose	90,000 - 80,000 J
Cooling	5° C
Sessions	3

* Database Onda protocols refer to a 15x15 cm treatment area – unless otherwise stated. In a single session could be treated 1 or more 15x15 squares according to single patient needs.



Before treatment.



Follow-up after the 2nd session.



Follow-up after the 3rd session.

Courtesy of :
Ciprian Constantin Flueras, M.D. - C Beauty anti-aging clinic, Brasov - Romania

CELLULITE

Coolwaves® Parameters*

Area	Thighs
Handpiece	Deep
Power	120 W
Dose	80,000 J
Cooling	5° C
Sessions	2

* Database Onda protocols refer to a 15x15 cm treatment area – unless otherwise stated. In a single session could be treated 1 or more 15x15 squares according to single patient needs.



Before treatment.



Follow-up after the 1st session.



Follow-up after the 2nd session.

Courtesy of :
Ciprian Constantin Flueras, M.D. - C Beauty anti-aging clinic, Brasov - Romania

LOCALIZED FAT AND LAXITY

Coolwaves® Parameters*

Area	Abdomen
Handpiece	Deep
Power	140 W
Dose	100,000 J
Cooling	5° C
Sessions	1

* Database Onda protocols refer to a 15x15 cm treatment area – unless otherwise stated. In a single session could be treated 1 or more 15x15 squares according to single patient needs.



Before treatment.



45 days after 1 single session.

CELLULITE

Coolwaves® Parameters*

Area	Thighs - Knees
Handpiece	Deep
Power	110 W
Dose	50,000 J
Cooling	5° C
Sessions	2

* Database Onda protocols refer to a 15x15 cm treatment area – unless otherwise stated. In a single session could be treated 1 or more 15x15 squares according to single patient needs.



Before treatment.



Follow-up after the 2nd session.

CELLULITE

Coolwaves® Parameters*

Area	Trochanter – Buttocks
Handpiece	Shallow
Power	140 W
Dose	100,000 J
Cooling	5° C
Sessions	1

* Database Onda protocols refer to a 15x15 cm treatment area – unless otherwise stated. In a single session could be treated 1 or more 15x15 squares according to single patient needs.



Before treatment.



30 days after 1 single session.

LAXITY

Coolwaves® Parameters*

Area	Arms
Handpiece	Shallow
Power	120 W
Dose	100,000 J
Cooling	5° C
Sessions	2

* Database Onda protocols refer to a 15x15 cm treatment area – unless otherwise stated. In a single session could be treated 1 or more 15x15 squares according to single patient needs.

1/2



Before treatment.



Follow-up after the 2nd session.

LAXITY

Coolwaves® Parameters*

Area	Arms
Handpiece	Shallow
Power	120 W
Dose	100,000 J
Cooling	5° C
Sessions	2

* Database Onda protocols refer to a 15x15 cm treatment area – unless otherwise stated. In a single session could be treated 1 or more 15x15 squares according to single patient needs.

2/2



Before treatment.



Follow-up after the 2nd session.

LOCALIZED FAT AND LAXITY

1/2

Coolwaves® Parameters*

Area	Abdomen
Handpiece	Deep
Power	120 W
Dose	180,000 J
Cooling	5° C
Sessions	1

* Database Onda protocols refer to a 15x15 cm treatment area – unless otherwise stated. In a single session could be treated 1 or more 15x15 squares according to single patient needs.



Before treatment.



30 days after 1 single session.

LOCALIZED FAT AND LAXITY

Coolwaves® Parameters*

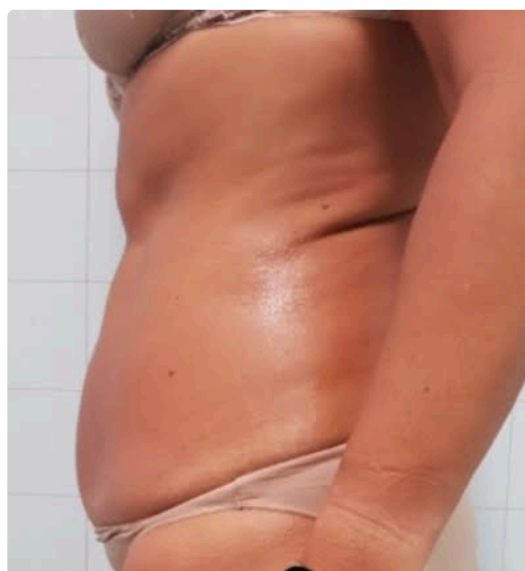
Area	Abdomen
Handpiece	Deep
Power	120 W
Dose	180,000 J
Cooling	5° C
Sessions	1

* Database Onda protocols refer to a 15x15 cm treatment area – unless otherwise stated. In a single session could be treated 1 or more 15x15 squares according to single patient needs.

2/2



Before treatment.



30 days after 1 single session.

CELLULITE

Coolwaves® Parameters*

Area	Trochanter – Buttocks Thighs
Handpiece	Deep
Power	120 W
Dose	180,000 J
Cooling	5° C
Sessions	1

* Database Onda protocols refer to a 15x15 cm treatment area – unless otherwise stated. In a single session could be treated 1 or more 15x15 squares according to single patient needs.



Before treatment.



30 days after 1 single session.

CELLULITE

Coolwaves® Parameters*

Area	Inner Thighs
Handpiece	Deep
Power	120 W
Dose	180,000 J
Cooling	5° C
Sessions	1

* Database Onda protocols refer to a 15x15 cm treatment area – unless otherwise stated. In a single session could be treated 1 or more 15x15 squares according to single patient needs.



Before treatment.



30 days after 1 single session.



60 days after 1 single session.

Courtesy of:
Benedetta Salsi M.D., Reggio Emilia - Italy

LOCALIZED FAT AND LAXITY

Coolwaves® Parameters*

Area	Abdomen
Handpiece	Deep
Power	120 W
Dose	180,000 J
Cooling	5° C
Sessions	1

* Database Onda protocols refer to a 15x15 cm treatment area – unless otherwise stated. In a single session could be treated 1 or more 15x15 squares according to single patient needs.



Before treatment.



30 days after 1 single session.



60 days after 1 single session.

Courtesy of:
Benedetta Salsi M.D., Reggio Emilia - Italy

CELLULITE

Coolwaves® Parameters*

Area	Thighs
Handpiece	Deep
Power	120 W
Dose	180,000 J
Cooling	5° C
Sessions	4

* Database Onda protocols refer to a 15x15 cm treatment area – unless otherwise stated. In a single session could be treated 1 or more 15x15 squares according to single patient needs.



Before treatment.



30 days after the 4th session.

LAXITY

Coolwaves® Parameters*

Area	Abdomen
Handpiece	Deep
Power	120 W
Dose	180,000 J
Cooling	5° C
Sessions	1

* Database Onda protocols refer to a 15x15 cm treatment area – unless otherwise stated. In a single session could be treated 1 or more 15x15 squares according to single patient needs.



Before treatment.



60 days after 1 single session.

LOCALIZED FAT AND LAXITY

Coolwaves® Parameters*

Area	Abdomen
Handpiece	Deep
Power	120 W
Dose	170,000 J
Cooling	5° C
Sessions	1

* Database Onda protocols refer to a 15x15 cm treatment area – unless otherwise stated. In a single session could be treated 1 or more 15x15 squares according to single patient needs.



Before treatment.



45 days after 1 single session.

CELLULITE

Coolwaves® Parameters*

Area	Thighs
Handpiece	Shallow
Power	140 W
Dose	120,000 J
Cooling	5° C
Sessions	2

* Database Onda protocols refer to a 15x15 cm treatment area – unless otherwise stated. In a single session could be treated 1 or more 15x15 squares according to single patient needs.



Before treatment.



60 days after the 2nd treatment.

LAXITY

Coolwaves® Parameters*

Area	Abdomen
Handpiece	Shallow
Power	160 W
Dose	160,000 J
Cooling	5° C
Sessions	3
Description	Patient with skin laxity problems in the abdominal area close to the navel, despite his intense sports activity and good muscular tone.

* Database Onda protocols refer to a 15x15 cm treatment area – unless otherwise stated. In a single session could be treated 1 or more 15x15 squares according to single patient needs.



Before treatment.



30 days after the 3rd treatment.

LAXITY

Coolwaves® Parameters*

Area	Arms
Handpiece	Shallow
Power	130 W
Dose	120,000 J
Cooling	5° C
Sessions	3

* Database Onda protocols refer to a 15x15 cm treatment area – unless otherwise stated. In a single session could be treated 1 or more 15x15 squares according to single patient needs.



Before treatment.



30 days after the 3rd treatment.

LAXITY

Coolwaves® Parameters*

Area	Abdomen
Handpiece	Deep
Power	170 W
Dose	150,000 J
Cooling	5° C
Sessions	3

* Database Onda protocols refer to a 15x15 cm treatment area – unless otherwise stated. In a single session could be treated 1 or more 15x15 squares according to single patient needs.



Before treatment.



30 days after the 3rd treatment.

LAXITY

Coolwaves® Parameters*

Area	Abdomen
Handpiece	Deep
Power	170 W
Dose	150,000 J
Cooling	5° C
Sessions	1

* Database Onda protocols refer to a 15x15 cm treatment area – unless otherwise stated. In a single session could be treated 1 or more 15x15 squares according to single patient needs.



Before treatment.



30 days after 1 single session.

LAXITY

Coolwaves® Parameters*

Area	Abdomen
Handpiece	Deep
Power	150 W
Dose	150,000 J
Cooling	5° C
Sessions	4

* Database Onda protocols refer to a 15x15 cm treatment area – unless otherwise stated. In a single session could be treated 1 or more 15x15 squares according to single patient needs.



Before treatment.



30 days after the 4th treatment.

LOCALIZED FAT AND LAXITY

Coolwaves® Parameters*

Area	Abdomen - Bra Line
Handpiece	Deep
Power	170 W
Dose	160,000 J
Cooling	5° C
Sessions	3

* Database Onda protocols refer to a 15x15 cm treatment area – unless otherwise stated. In a single session could be treated 1 or more 15x15 squares according to single patient needs.



Before treatment.



30 days after the 3rd treatment.

LOCALIZED FAT AND LAXITY

Coolwaves® Parameters*

Area	Abdomen
Handpiece	Shallow
Power	170 W
Dose	160,000 J
Cooling	5° C
Sessions	1

* Database Onda protocols refer to a 15x15 cm treatment area – unless otherwise stated. In a single session could be treated 1 or more 15x15 squares according to single patient needs.



Before treatment.



30 days after 1 single session.

CELLULITE AND LOCALIZED FAT

Coolwaves® Parameters*

Area	Trochanter – Buttocks - Under Buttocks
Handpiece	Deep (1 session) Shallow (3 sessions)
Power	170 W
Dose	150,000 J (Deep) 160,000 J (Shallow)
Cooling	5° C
Sessions	4

* Database Onda protocols refer to a 15x15 cm treatment area – unless otherwise stated. In a single session could be treated 1 or more 15x15 squares according to single patient needs.



Before treatment.



30 days after the 4th treatment.

LOCALIZED FAT AND LAXITY

Coolwaves® Parameters*

Area	Abdomen
Handpiece	Deep - Shallow
Power	140 W
Dose	100,000 J
Cooling	5° C
Sessions	3

* Database Onda protocols refer to a 15x15 cm treatment area – unless otherwise stated. In a single session could be treated 1 or more 15x15 squares according to single patient needs.



Before treatment.



30 days after the 3rd treatment.

LAXITY

Coolwaves® Parameters*

Area	Abdomen
Handpiece	Shallow
Power	120 W
Dose	100,000 J
Cooling	5° C
Sessions	2

* Database Onda protocols refer to a 15x15 cm treatment area – unless otherwise stated. In a single session could be treated 1 or more 15x15 squares according to single patient needs.



Before treatment.



Follow-up after the 2nd session.

LOCALISED FAT

Coolwaves® Parameters*

Area	Shoulder Blades and Anterolateral Flank
Handpiece	Shallow
Power	180 W
Dose	185,000 J
Cooling	5° C
Sessions	1

* Database Onda protocols refer to a 15x15 cm treatment area – unless otherwise stated. In a single session could be treated 1 or more 15x15 squares according to single patient needs.



Before treatment.



90 days after 1 single session.

LAXITY

Coolwaves® Parameters*

Area	Arms
Handpiece	Shallow
Power	160 W - 1 st session; 180 W - 2 nd session; 190 W - 3 rd session
Dose	100,000 J
Cooling	5° C
Sessions	2

* Database Onda protocols refer to a 15x15 cm treatment area – unless otherwise stated. In a single session could be treated 1 or more 15x15 squares according to single patient needs.



Before treatment.



Follow-up after the 3rd session.

CELLULITE

Coolwaves® Parameters*

Area	Trochanter – Under Buttocks – Thighs
Handpiece	Deep
Power	140 W
Dose	90,000 J
Cooling	5° C
Sessions	1

* Database Onda protocols refer to a 15x15 cm treatment area – unless otherwise stated. In a single session could be treated 1 or more 15x15 squares according to single patient needs.



Before treatment. The "hole" visible under the left buttock is due to the muscle contraction requested by the doctor to her patient.



5 months after 1 single session. It is possible to observe an important reduction of the "hole" under the left buttock when the doctor asked to her patient to contract the muscle.

LOCALIZED FAT AND LAXITY

Coolwaves® Parameters*

Area	Abdomen
Handpiece	Deep
Power	140 W
Dose	100,000 J
Cooling	5° C
Sessions	2

* Database Onda protocols refer to a 15x15 cm treatment area – unless otherwise stated. In a single session could be treated 1 or more 15x15 squares according to single patient needs.



Before treatment.



35 days after the 2nd session.

LOCALIZED FAT AND LAXITY

Coolwaves® Parameters*

Area	Abdomen
Handpiece	Deep
Power	140 W
Dose	100,000 J
Cooling	5° C
Sessions	2

* Database Onda protocols refer to a 15x15 cm treatment area – unless otherwise stated. In a single session could be treated 1 or more 15x15 squares according to single patient needs.



Before treatment.



35 days after the 2nd session.

DEKA
Innate Ability

DEKA M.E.L.A. s.r.l.
Via Baldanzese, 17
50041 Calenzano (FI) - Italy
Ph. +39 055 88.74.942
Fax +39 055 88.32.884



www.dekalaser.com